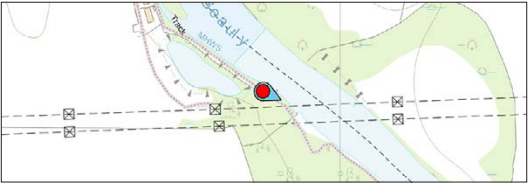




VIEWPOINT 3: View east from Core Path IN03.04 along the River Beauly

Beauly BESS



Location Plan

OS reference: 251867E 844435N  
AOD: 6m  
Direction of view: 68°  
Dist to site boundary: 565m

Visualisation Type: Type 3  
Horizontal field of view: 65.5° (cylindrical projection)  
Vertical field of view: 25°

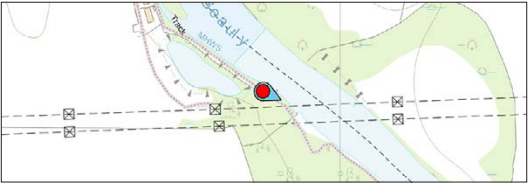
Camera: Canon EOS 5DS  
Lens: Canon 50mm FFL  
Camera height: 1.5m AGL  
Date and time: 25/07/2024 14:04





**VIEWPOINT 3:** View east from Core Path IN03.04 along the River Beauly

**Beauly BESS**



Location Plan

OS reference: 251867E 844435N  
AOD: 6m  
Direction of view: 68°  
Dist to site boundary: 565m

Visualisation Type: Type 3  
Horizontal field of view: 65.5° (cylindrical projection)  
Vertical field of view: 25°

Camera: Canon EOS 5DS  
Lens: Canon 50mm FFL  
Camera height: 1.5m AGL  
Date and time: 25/07/2024 14:04

**Note:** development would be located behind foreground vegetation